

User Manual**July 8, 2005****M&M Replenishment TO/Slips v1.xx**

For Retail Pro® v8.40 and Above

Overview

M&M's Replenishment modification generates replenishment Transfer Orders or Slips based on sales from the previous day (or period).

The utility is designed to run in unattended mode as a scheduled activity. However, it must be run at least once in manual mode to set parameters.

The utility should only be installed and run on the Retail Pro Main server.

Replenishment Utility

Start the utility. You will see the main screen:

Enter or browse for the location of the Retail directory.

The WS number is the workstation number used to connect to the Retail Pro database. Normally, WS 0 will operate correctly. If you have connection errors, try WS 1.

Generate TO/Generate Slips

Click "Generate TO" to generate a replenishment Transfer Order. If Transfer Order is selected, a single replenishment TO is generated on the Main. This TO will have all items that were sold for the previous day. Item quantities are allocated by store based on the quantity sold at the store.

Transfer Orders that are generated by MMR replenish.exe will have "MM Replenish" in the TO Note 1 field.

Click "Generate Slips" to generate replenishment Out Slips. If Out Slips is selected, then an Out Slip is generated for each store that had sales for the previous day. The From Store is always Store 000.

Slips that are generated by MMR replenish.exe will have "MM Replenish" in the Slip Comment 1 field.

Replenish From Store

Normally, replenishment is done from Store 000 (the Main). However, if the client has a different installation and wants to replenish from a different store (such as Store 001), enter the Store Number.

Move ProcIn Document List

This is a VERY important setting. The utility uses a file named DocList.txt to determine which Receipts were polled to the Main in the last polling cycle.

IF "MOVE PROCIN DOCUMENT LIST" IS CHECKED, THEN THE DOCLIST.TXT FILE IS MOVED TO A DIRECTORY NAMED DLPROCESSED UNDER THE RPRO FOLDER ON THE MAIN.

Obviously, if another program or utility is using the DocList.txt file, that program or utility will not be able to find the file if it is moved. If another program is going to use the DocList.txt file, then either uncheck "Move ProcIn Document List" OR schedule MMReplenish.exe to run AFTER the other program.

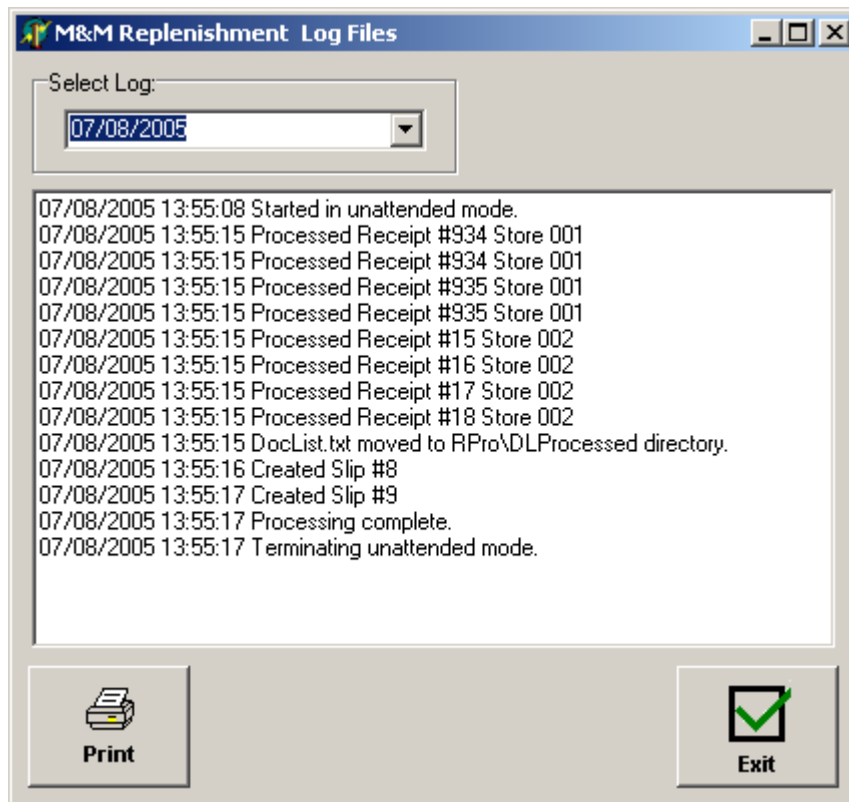
Run

When the Run button is selected, the utility will process the Receipt information and generate a TO or Slips.

Log Files

The utility generates a log file every time it is run. Logs more than 60 days old are automatically purged.

To view the log files, click Log from the main screen. The Replenishment Log screen will be displayed:



The most recent log will be displayed. To view a different log, select the date from the drop down.

The log includes all Receipts that were processed with their store number.

If the "Move ProcIn Document List" is checked, the log indicates that the file was moved.

The log also includes a record of all TOs and Slips that were generated with the TO or Slip number.

Unattended Mode

When run in unattended mode, the last parameters that were entered are used to run the utility.