

Installation Guide

Email Documents v1.x

For Retail Pro® 8-Series v8.52 and Above

Overview

This module allows you to email Receipts, Sales Orders and Purchase Orders from Retail Pro.

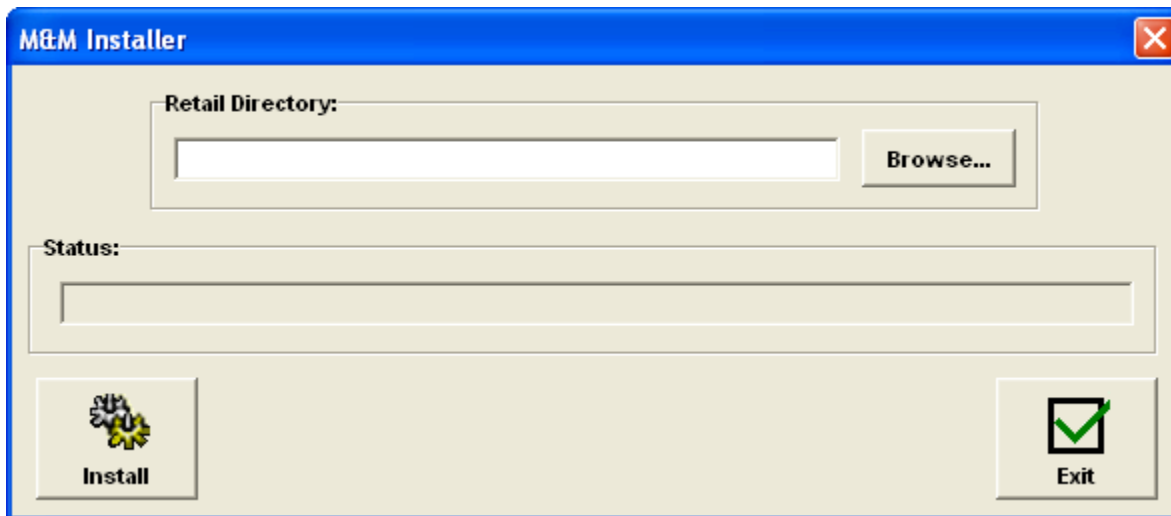
The installation is provided in a zip file named MMEmailDocs-vXXxx.zip where XXxx is the version number.

Installation

1. Run the MM Installer

Unzip the MMEmailDocs-vXXxx.zip file to a directory on the target system. You may want to use an empty directory. Optionally, copy the license file to the same directory.

Run the MMInstall.exe program. You will see:



Enter or browse for the location of the Retail directory and click the Install button.

Files will be copied to the appropriate directories. If there are any errors, they will be displayed and the files can be copied manually. If the license file is in the directory with the installer, it will be copied to the plugins directory.

File Location Summary

After installation, the following files will be installed in the indicated directories:

File	Location	Notes
MMEmailDocs.bpl	[Retail]\plugins\	Email Docs Plugin
MMEMDEmail.bmp	[Retail]\plugins\	Bitmap
MMEMDSetup.bmp	[Retail]\plugins\	Bitmap
MMEmdDocs.mdb	[Retail]\RPro	Database
vclado50.bpl	[Retail]	
vcldb50.bpl	[Retail]	
vcx50.bpl	[Retail]	
Email Docs Install.pdf	Install directory	This installation manual.
Email Docs User.doc	Install directory	User Manual

2. Check Desktop Shortcuts

If Retail Pro is started using a desktop shortcut, do the following at the Main and EVERY workstation on the Main:

- 1) Right click the shortcut on the desktop.
- 2) Click Properties.
- 3) Check the "Start In" directory for the shortcut. If it is not set to the location of the Retail directory, change it. Enter the full path (using drive letter) to the Retail directory.

NOTE: On workstations, the path must use the mapped network drive from the workstation to the Main or Remote server.

3. Install the ASPEmail Component

If you haven't already done it, download the ASPEmail.dll from the Persits.com web site. This is a free component.

Copy the ASPEmail.dll to the RPro server and every Workstation that will use the plugin.

Register the dll on every system using Regsvr32.

4. Install the novaPDF Printer

The novaPDF printer software can be obtained at www.novapdf.com. There are several different license types.

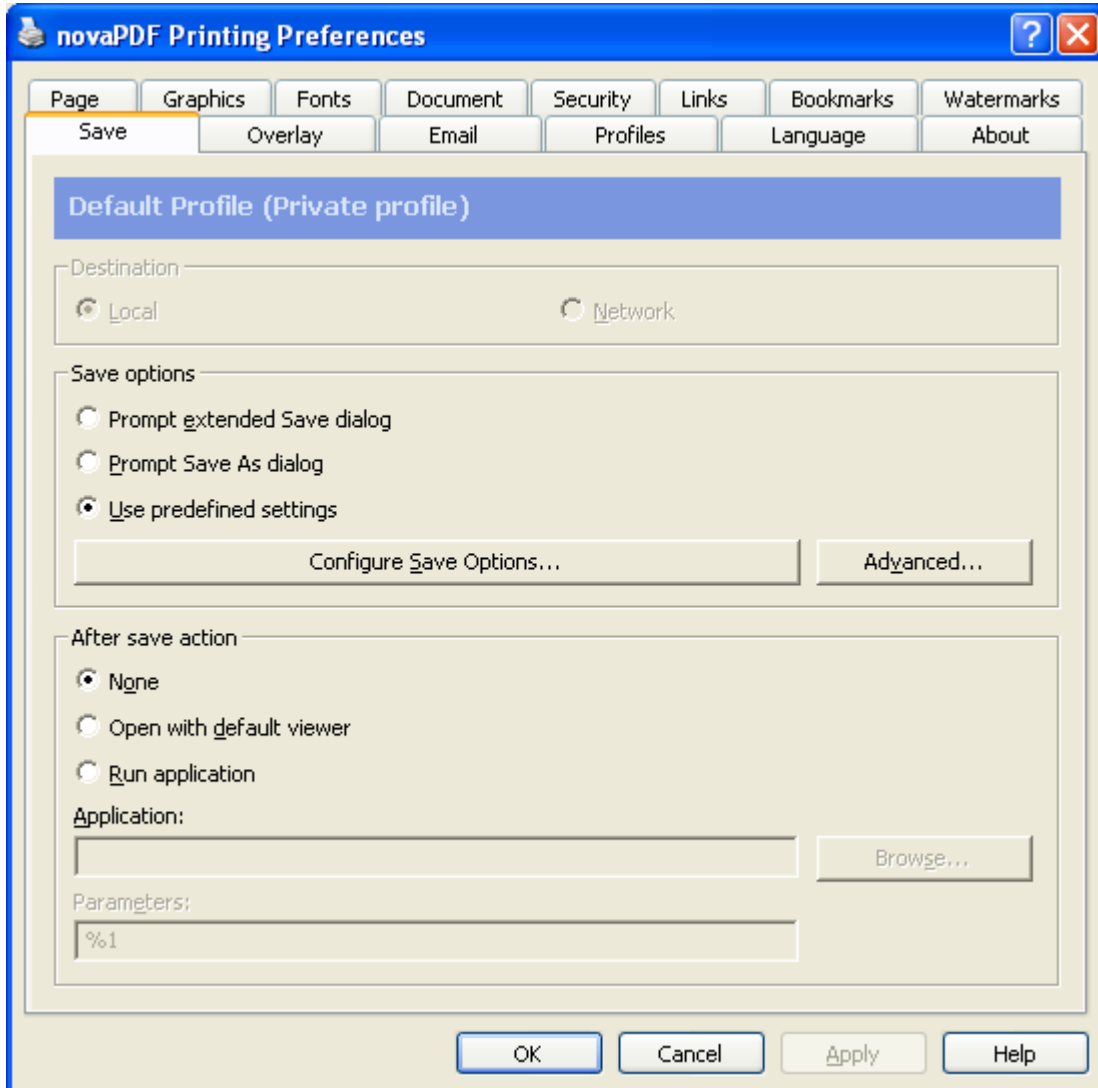
The novaPDF Lite (Desktop) is recommended. The novaPDF software must be installed and configured on every workstation that will use the plugin.

The plugin cannot use the novaPDF in a shared printing environment or as a network printer.

Install the printer as novaPDF. Do not use a different name.

Once the novaPDF is installed, it must be configured.

Open the Windows Printers and Faxes dialog. Select the novaPDF printer, right click and select properties. From the Properties screen General tab, select Printing Preferences. This will display the novaPDF preferences screen. Select the Save tab:



Select the "Use Predefined Settings" radio button.

Select "None" for the "After save action".

Click the Configure Save Options. This will display the Save Options screen:

Folder

Folder name:

C:\Temp

Browse...

File

File name:

Nova.pdf

Macro

Example: Nova.pdf

When file exists:

Overwrite

Password:

OK Cancel Help

Enter or browse for a folder name. This is where the document PDF file will be created. The directory must be accessible from the plugin. You will enter this directory name in the plugin.

Enter Nova.pdf as the file name. DO NOT ENTER A DIFFERENT FILE NAME.

Set "When file exists" to Overwrite.

Click OK and return to the novaPDF Printing Preferences screen.

Select the About tab and use the Register button to register the novaPDF.

INSTALLATION IS COMPLETE.